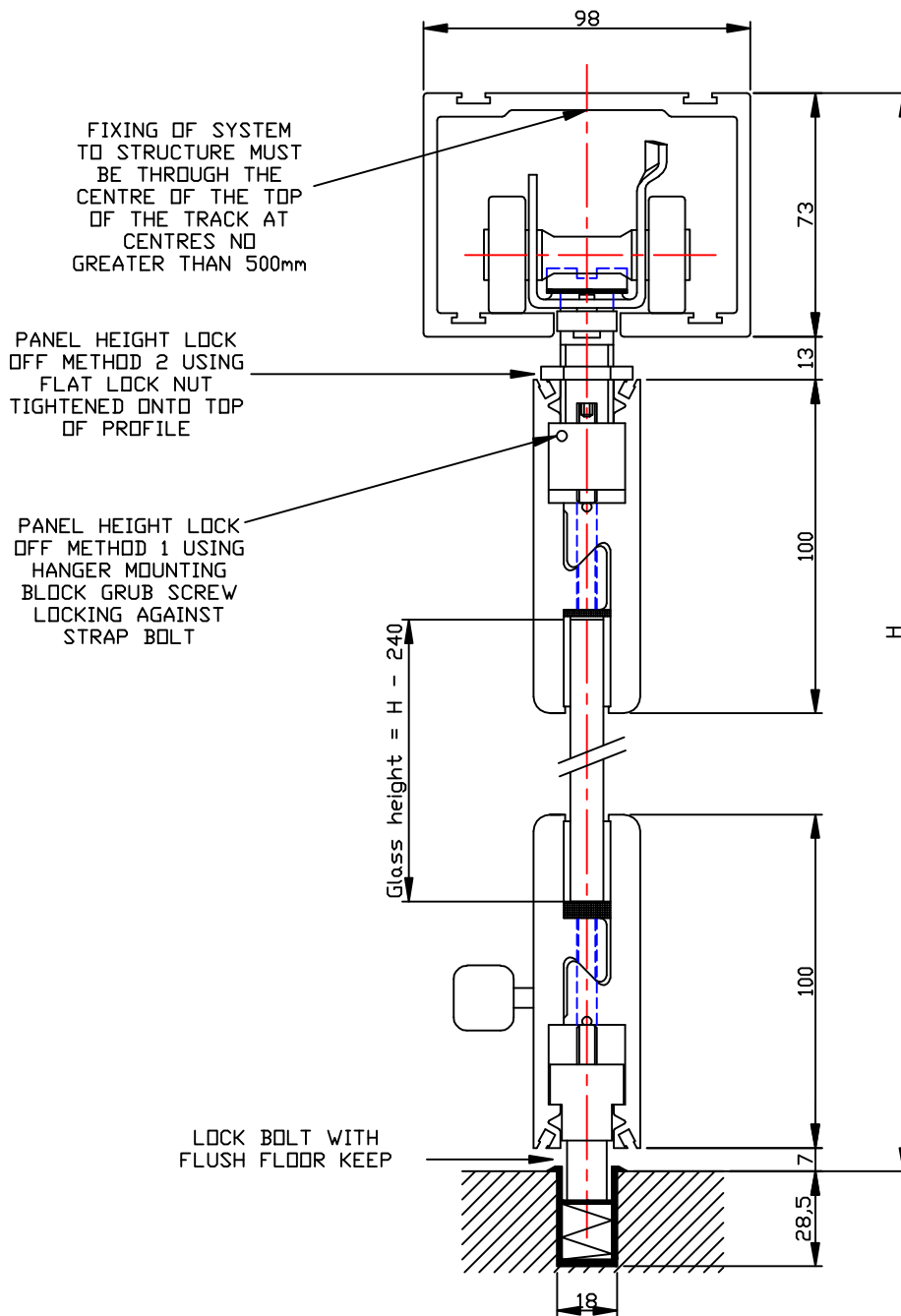


# FRP02 GLASS PROFILE ASSEMBLY/INSTALLATION GUIDE WHEN USED WITH FLEXIROL TRACK



## NOTES

- 1) PROFILE GROUND LOCKING MECHANISMS MUST BE ASSEMBLED WITH GREASE APPLIED TO THE MOVING PARTS.
- 2) HANGER/GUIDE MOUNTING BLOCKS MUST HAVE THREAD LOCK APPLIED TO THE FIXING GRUB SCREWS.
- 3) HANGER STRAP BOLT 'LOCKING OFF' NUTS SHOULD HAVE THREAD LOCK APPLIED AFTER FINAL HEIGHT ADJUSTMENT.
- 4) PROFILE CLAMPING BOLTS MUST EACH BE TIGHTENED TO 18Nm.
- 5) THERE ARE TWO METHODS OF LOCKING OFF THE HANGER STRAP BOLT AFTER FINAL HEIGHT ADJUSTMENT. FIRST METHOD - HANGER MOUNTING BLOCK HAS A GRUB SCREW LOCK OFF, HOWEVER THIS MAY REQUIRE AN EXTENDED ALLEN KEY TO REACH BLOCK IN PROFILE. SECOND METHOD - BY USING FLAT LOCK NUT ON THE STRAP BOLT THAT TIGHTENS AGAINST THE TOP OF THE PROFILE.
- 6) FOR 10mm THICK GLASS USE 2mm THICK GASKETS, AND FOR 12mm GLASS USE 1mm THICK GASKETS.
- 7) USE 5mm PLASTIC GLASS SPACERS ON THE BOTTOM PROFILE, AND 2mm PLASTIC GLASS SPACERS ON THE TOP PROFILE.
- 8) IF STANDARD 556 OR 555 HANGERS ARE USED WITH FRP02 PROFILES, THEN STANDARD BOLT MUST BE CUT DOWN TO ACHIEVE THE 13mm CLEARANCE BETWEEN THE TRACK AND GLASS PROFILE.